

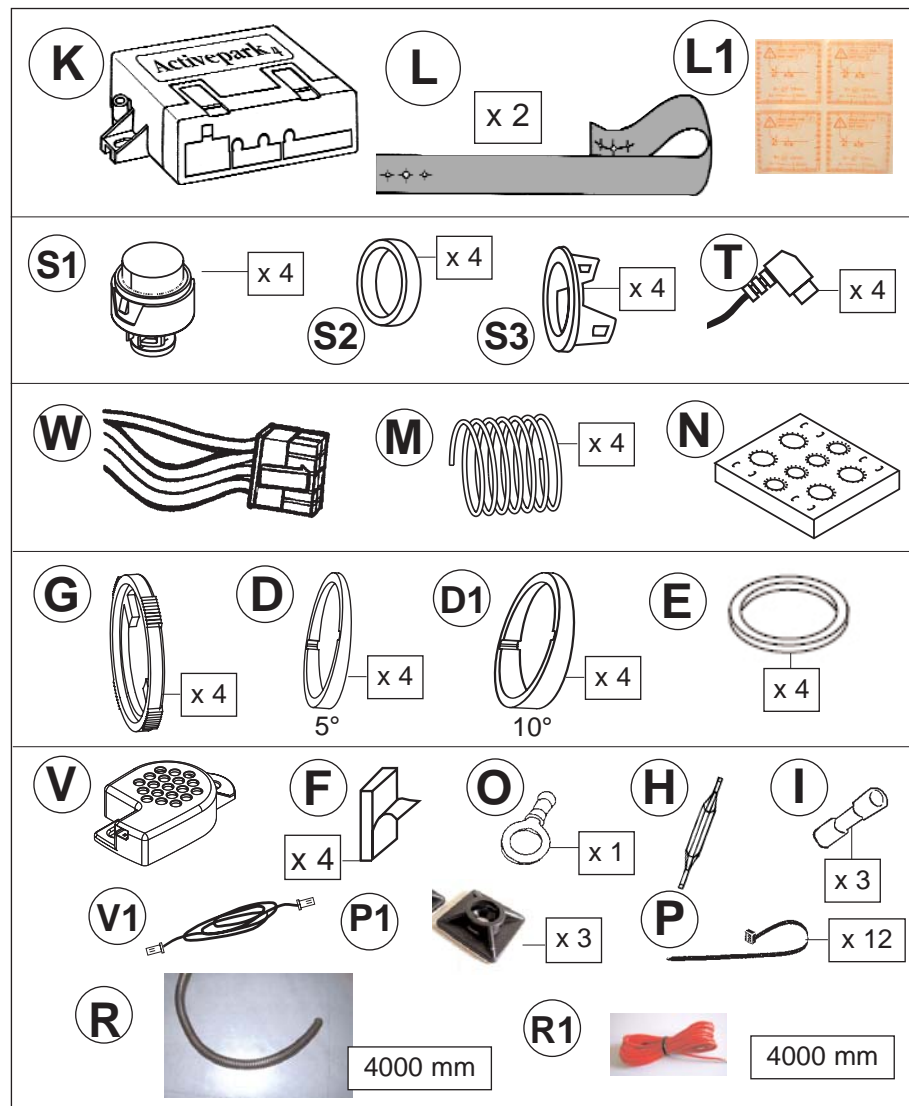


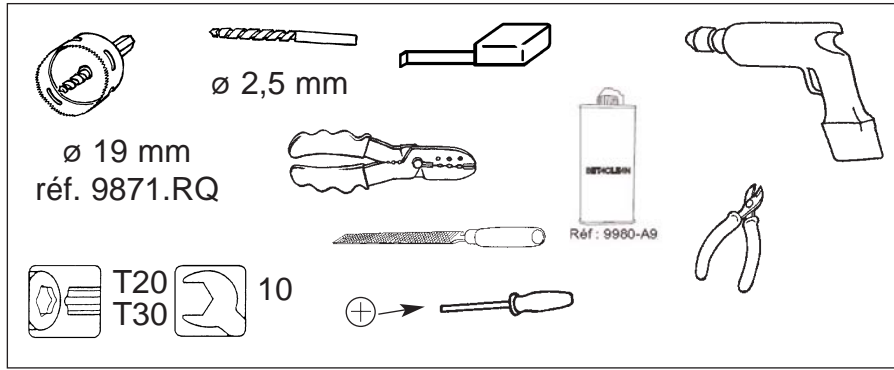
C4(B71)

ACT: 1988

Réf.: 9452.96

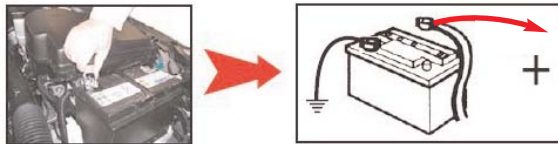
FR NOTICE DE POSE A USAGE PROFESSIONNEL / PHOTOS ET DESSINS NON CONTRACTUELS
 GB FITTING INSTRUCTIONS FOR PROFESSIONAL FITTERS / PICTURES AND DRAWINGS
 ES INSTRUCCIONES DE MONTAJE PARA USO PROFESIONAL / FOTOS Y DIBUJOS SIN
 P MANUAL DE MONTAGEM PARA UTILIZAÇÃO PROFISSIONAL / FOTOGRAFIAS E DESENHOS
 DE MONTAGEANLEITUNG FÜR PROFESSIONNELLEN EINSATZ / NICHT VERTRAGSMÄSSIGE
 IT ISTRUZIONI DI POSA AD USO PROFESSIONALE / FOTO E DISEGNI NON CONTRATTUALI
 NL MONTAGEHANDLEIDING VOOR PROFESSIONEEL GEBRUIK / FOTO'S EN TEKENINGEN



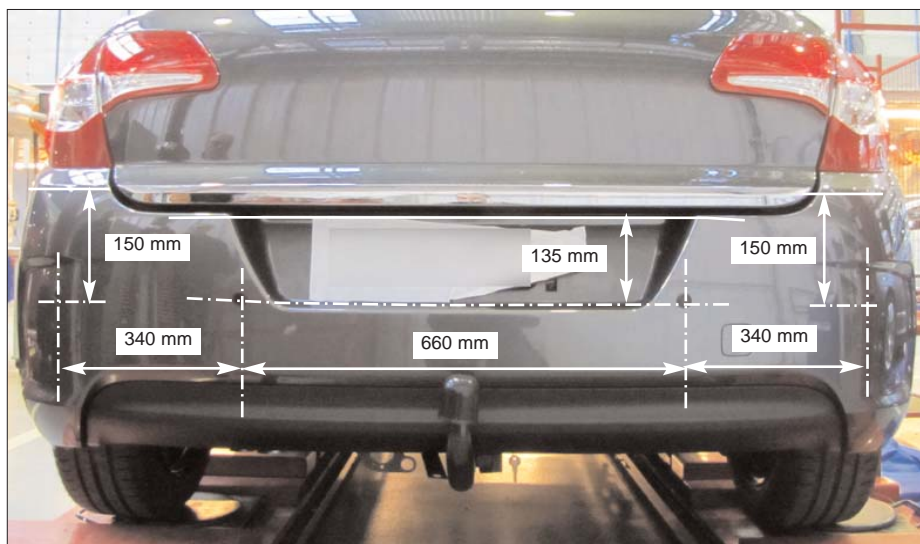


	F	GB	D	E	I	P	NL
BE	Bleu	Blue	Blau	Azul	Blu	Azul	Blauw
JN	Jaune	Yellow	Gelb	Yema de huevo	Giallo	Amarelo	Geel
BA	Blanc	White	Leertaste	Blanco	Bianco	Branco	Wit
NR	Noir	Black	Schwartz	Negro	Nero	Preto	Zwart
GR	Gris	Grey	Grau	Gris	Grigio	Cinzentos	Grijs
BE/RG	Bleu/Rouge	Blue/Red	Blau/Rot	Azul/Rojo	Blu/Rosso	Azul/Vermelho	Blauw/Rood

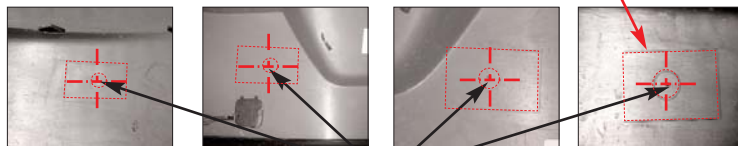
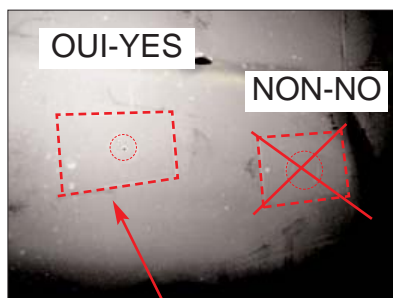
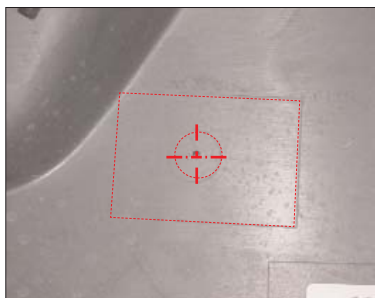
1



2



3

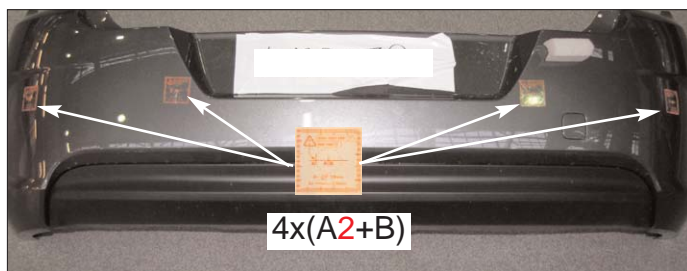


4xA1



+ ø 2,5 mm

A1 = ø2,5 mm



4xA2



+ ø 2,5 mm

4xB



+ ø 19 mm

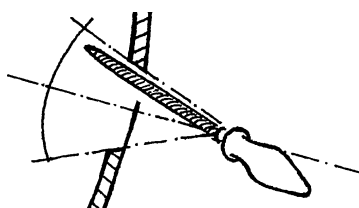
L1



A2 = ø2,5 mm

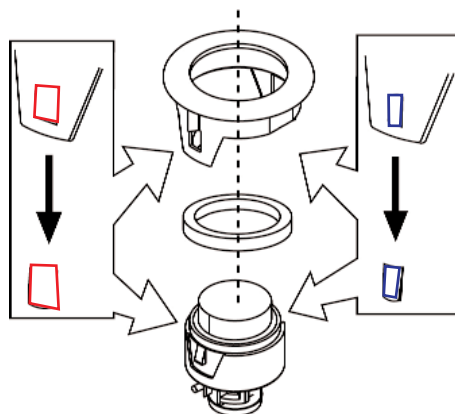
B = ø19 mm

4



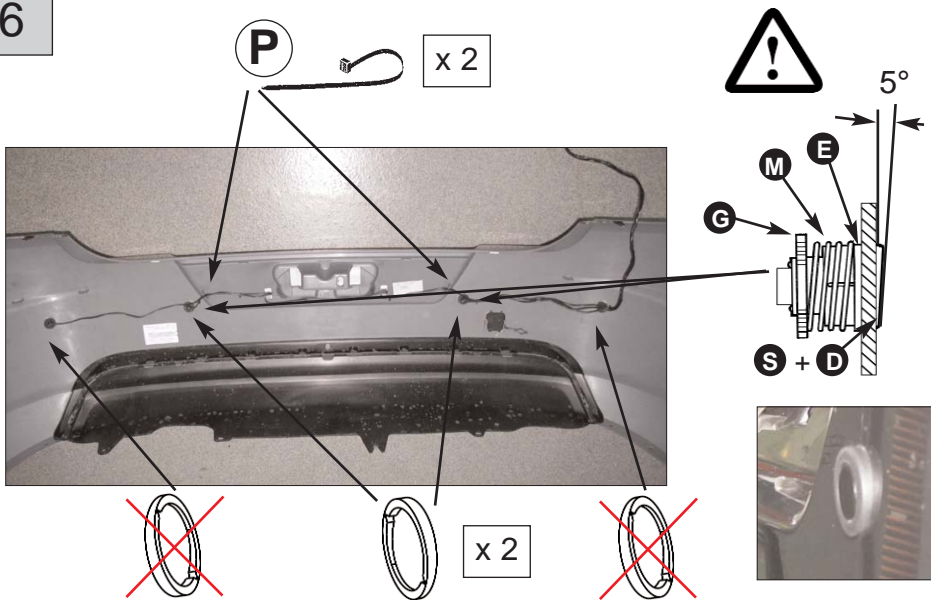
5

S

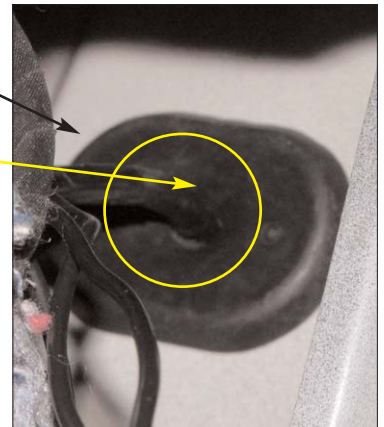


4x

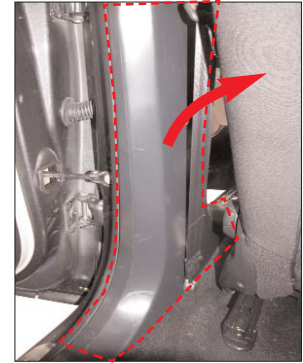
6



7



8



9



(R)



2500 mm

(R1)



2500 mm

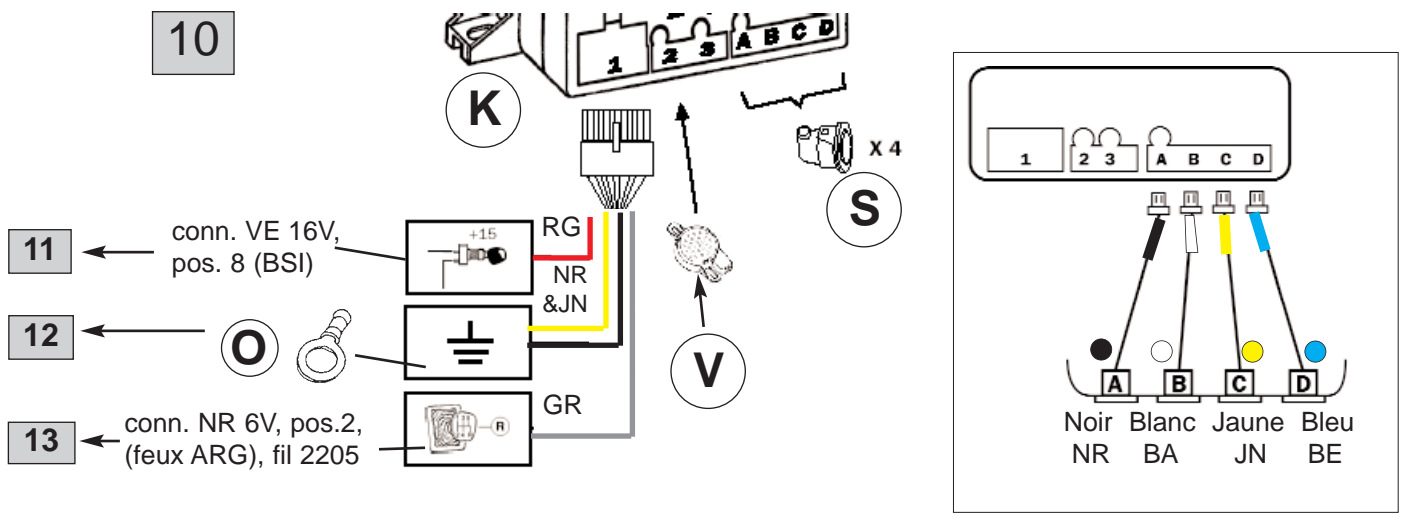


(P)

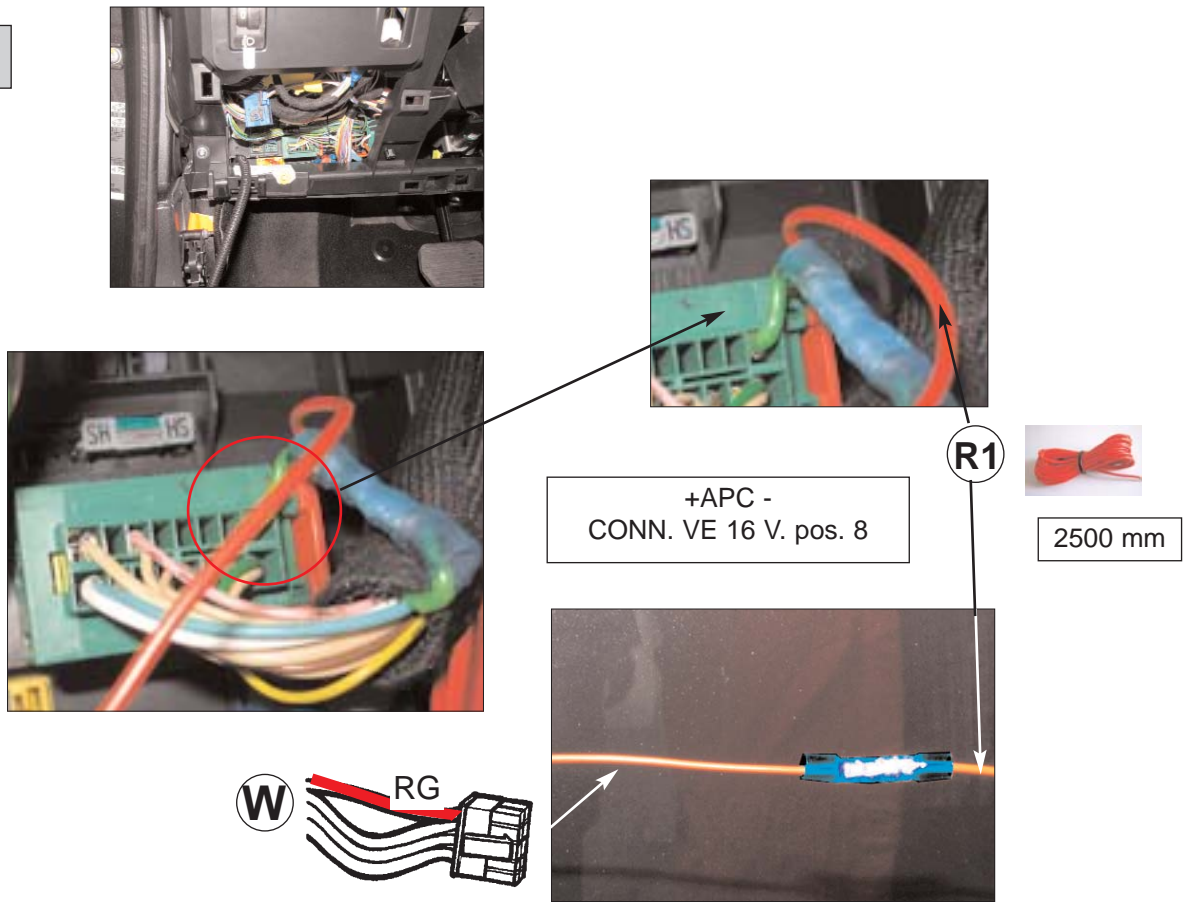


x 4

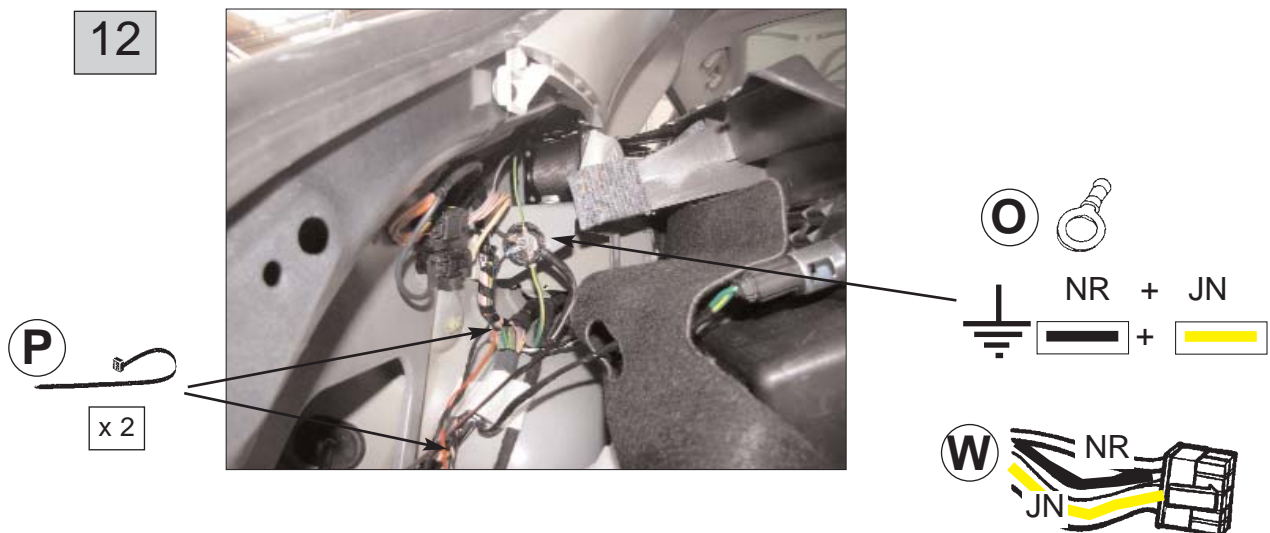
10



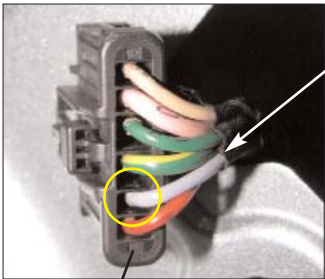
11



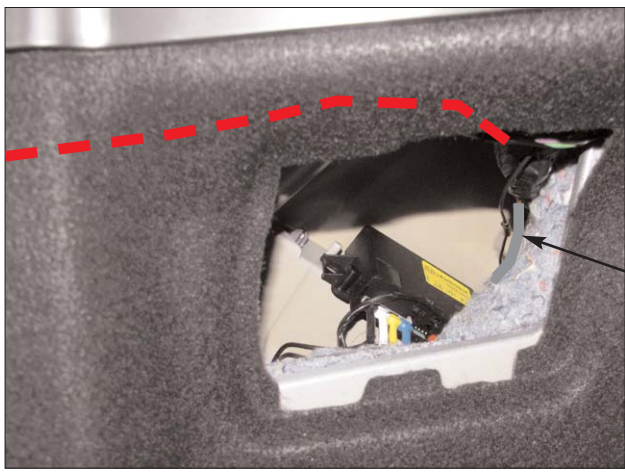
12



13

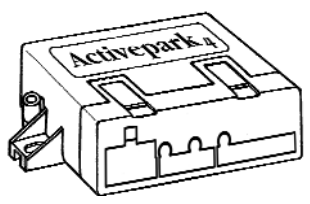


conn. NR 6V, pos.2,
(feux ARG), fil 2205



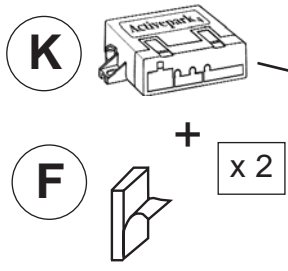
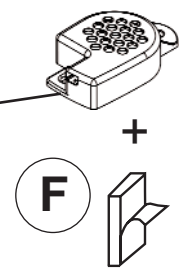
14

C4 (B71)

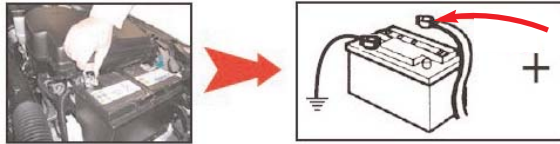


OFFSET	VOL.	SENS.
40%	70%	80%

15



15



16

