

## Install Speed Cameras for RT4/5/6 (WipCom/WipNav+)

**Notice :** Database provided for SpeedCam update is from SCDB.info, it means that you'll get alert in both ways. Also, you'll not see the street/road name of the radar, only speed limit and the type of radar.

~ Part 1: Install Speed Cameras on a Mac 🍏 (see Part 2 for Windows) ~

- Section 1 – Use USB Key (see section 2 for CD) -

### Step 1: Get the files

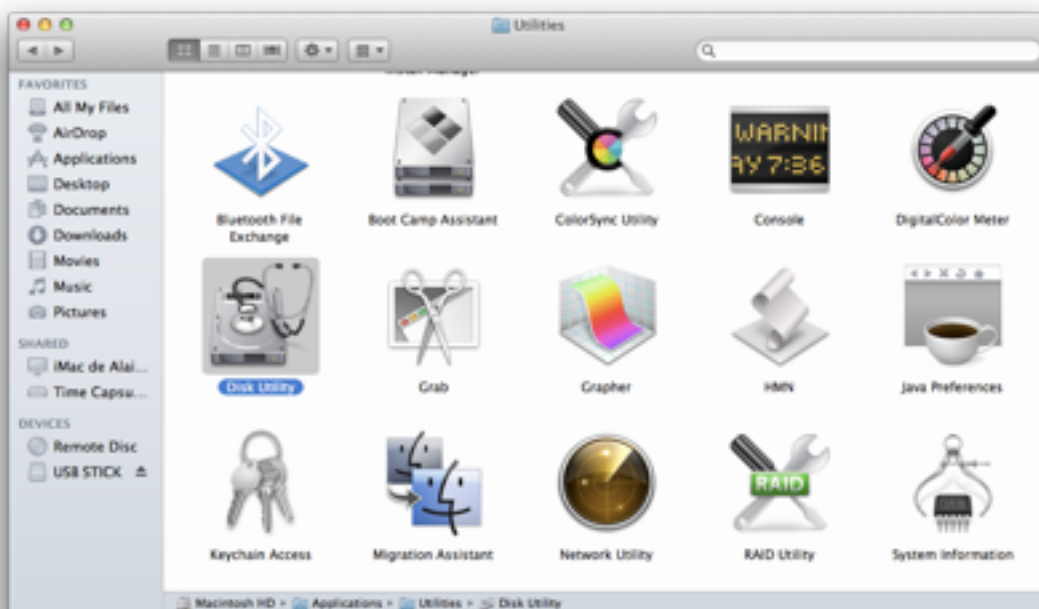
➡ Download the archive from GPSU.

➡ <http://gpsunderground.com/forum/peugeot-citroen>

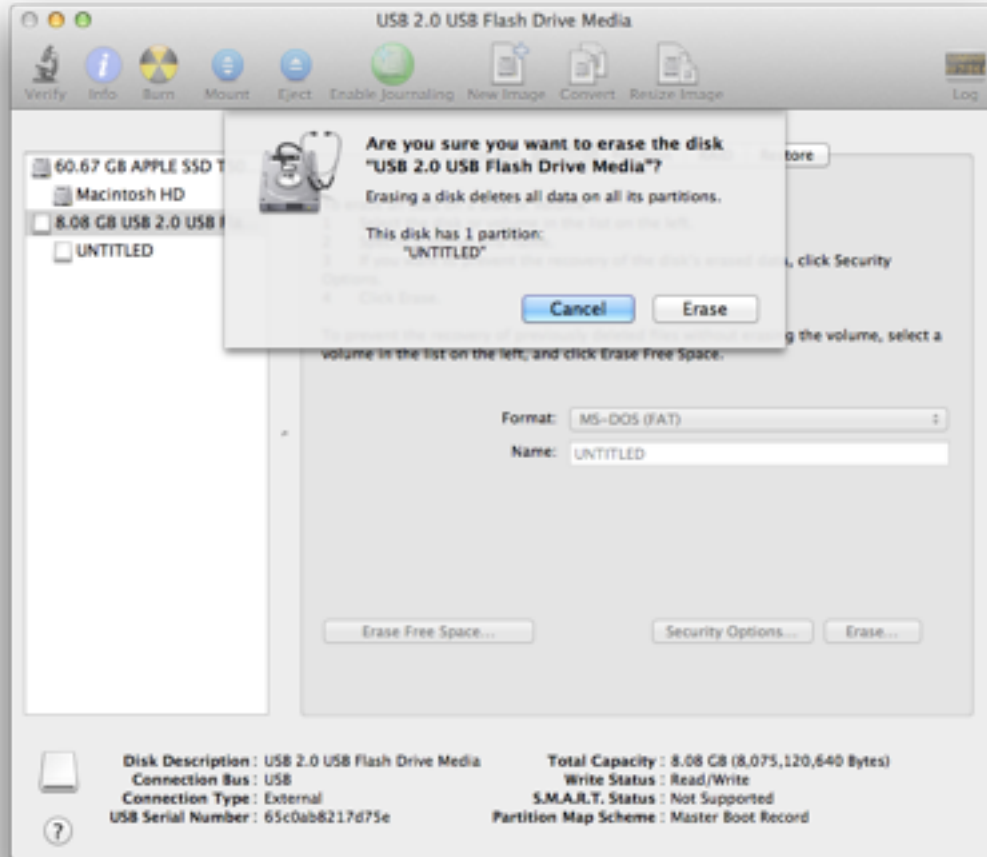
### Step 2: Prepare the key

➡ Plug the USB Key on your mac.

➡ Launch Disk Utility [located in Applications > Utilities] to format the key (It can solve the nasty bug on RT6).

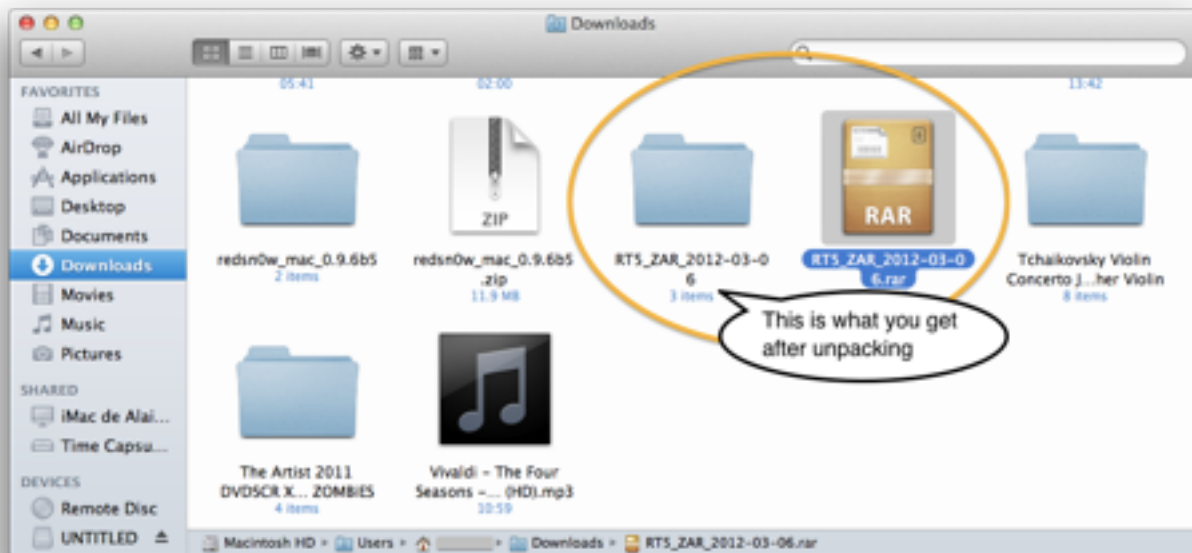


➡ In Disk Utility, select your USB KEY, and click the erase tab. Then click “Erase”.



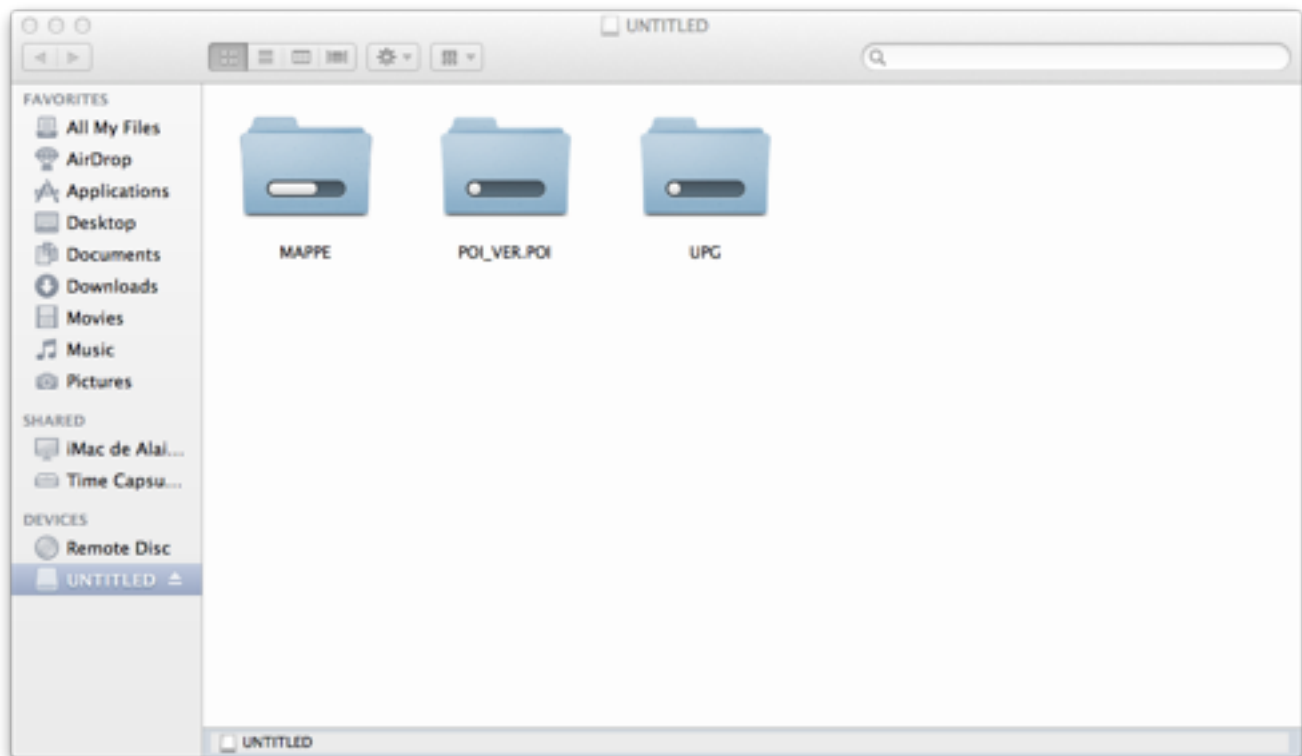
### Step 3: Prepare the files

- ➡ Unpack the archive previously downloaded.
- ➡ Open the folder “RTx\_ZAR\_xxxx-xx-xx”.

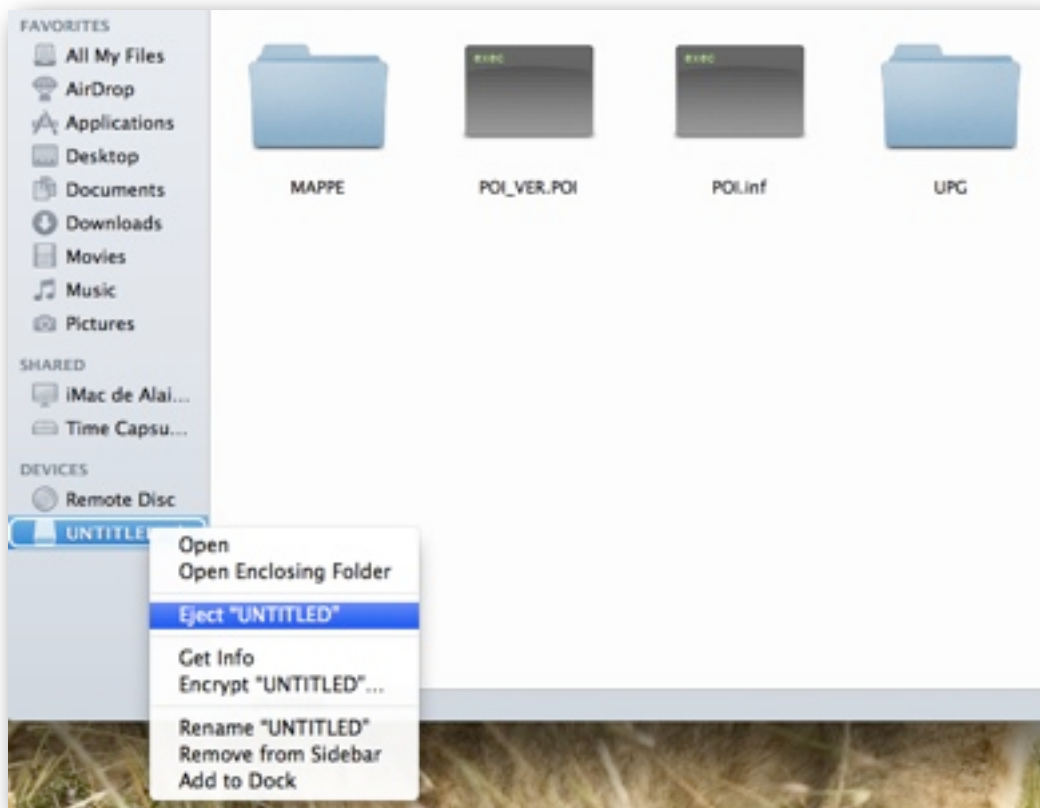


#### Step 4: Move the files from the mac to the memory storage

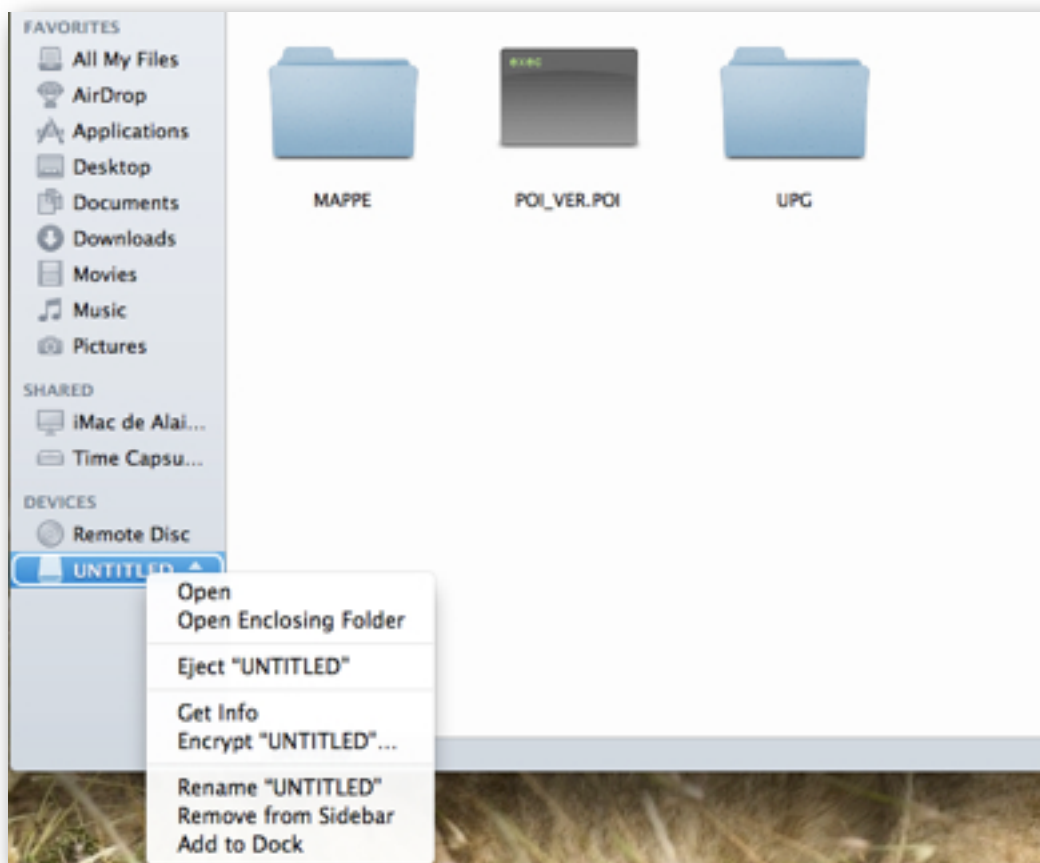
➡ Drop the files to the UNTITLED Key.



➡ If you have a **RT6**, you'll get this:



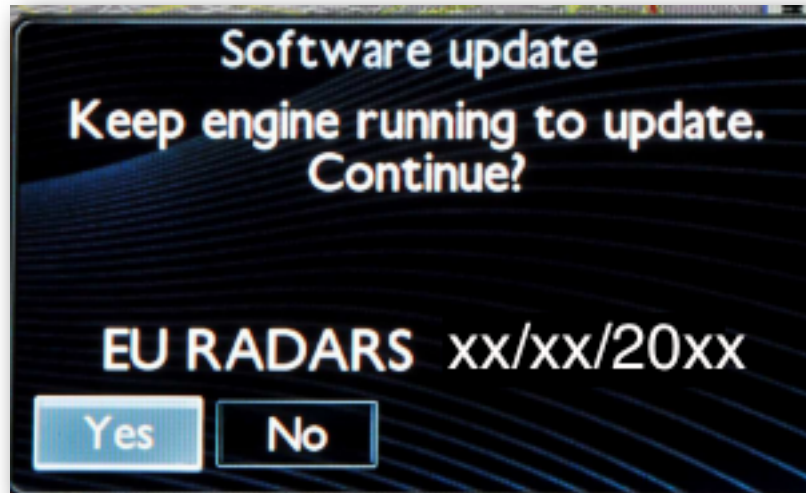
➡ If you have a **RT4** or a **RT5**, you'll get this:



☛ At the end, eject the USB stick PROPERLY otherwise you'll damage the memory!!!

### Step 5: Insert the key into the Rtx system

☛ The Rtx will ask you to confirm the installation, select "yes".



✓ *The installation is very fast (30s), then you can unplug the USB key. Done.*



- Section 2 – Use CD (see section 1 for USB) -

### Step 1: Get the files

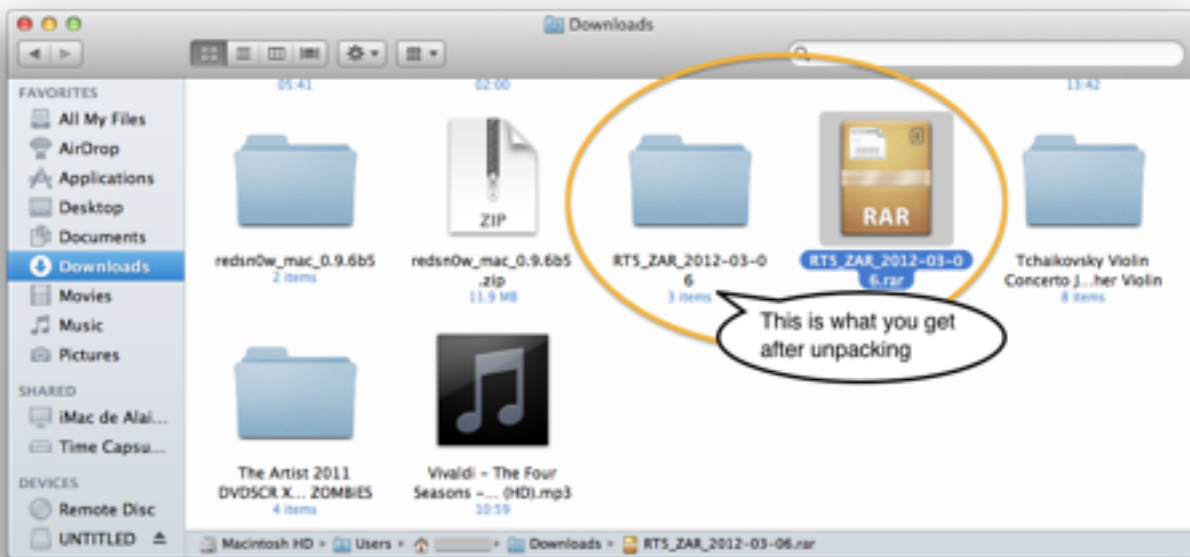
☛ Download the archive from GPSU.

➡ <http://gpsunderground.com/forum/peugeot-citroen>

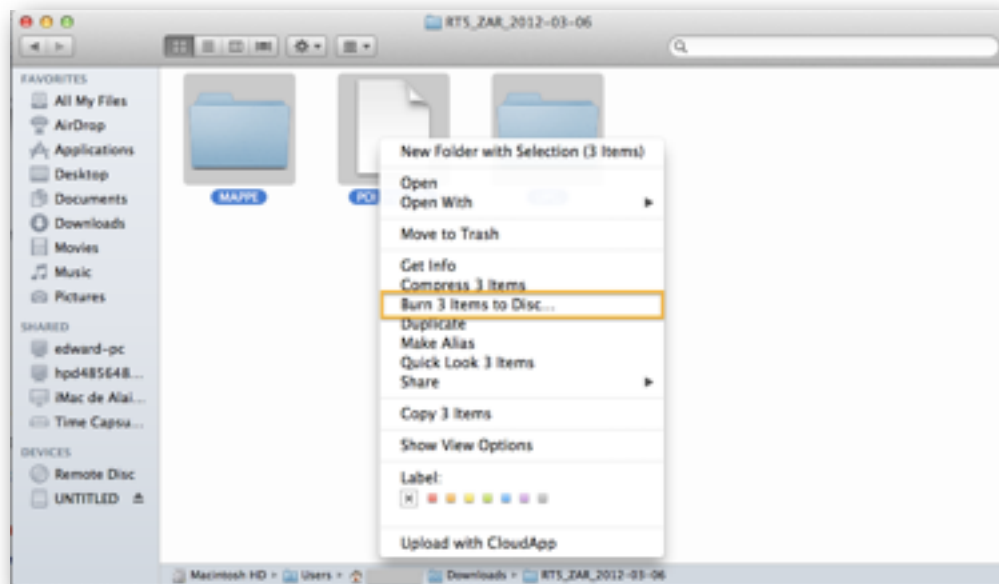
## Step 2: Prepare the files

➡ Unpack the archive previously downloaded.

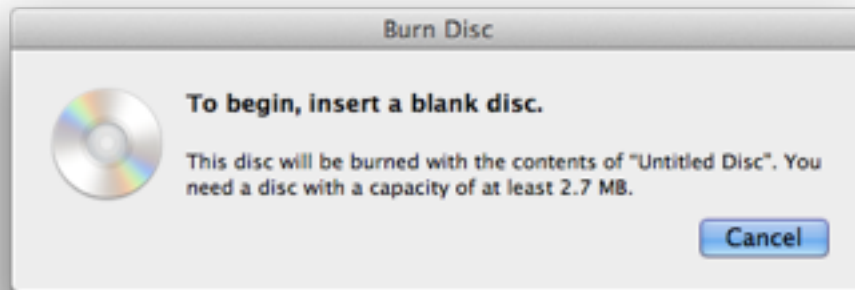
➡ Open the folder “RTx\_ZAR\_xxxx-xx-xx”.



## Step 3: Burn the files



➡ Select all the files inside de folder, then right click and burn (see the pic)

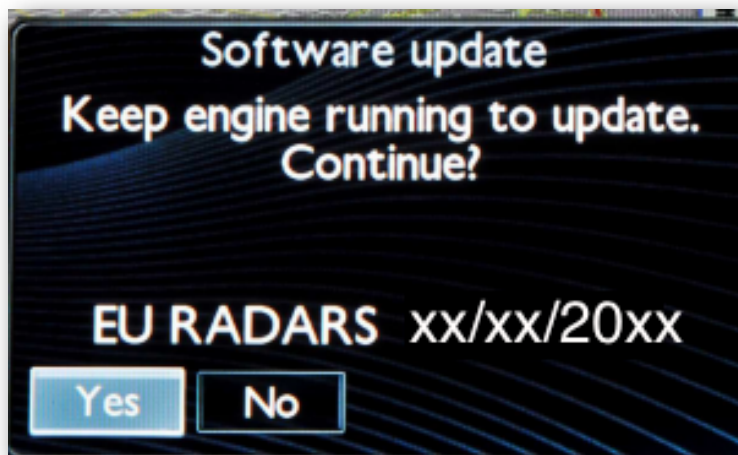


➡ Insert a blank disc, and follow the steps.

✓ *Burn the disc at low speed, max x4.*

#### **Step 4: Insert the burned CD into the Rtx system**

➡ The Rtx will ask you to confirm the installation, select "yes".



✓ *The installation is very fast (30s), then you can eject the CD. Done.*



## ~ Part 1: Install Speed Cameras on a PC ☹ ~

### - Section 1 – Use USB Key (see section 2 for CD) -

#### Step 1: Get the files

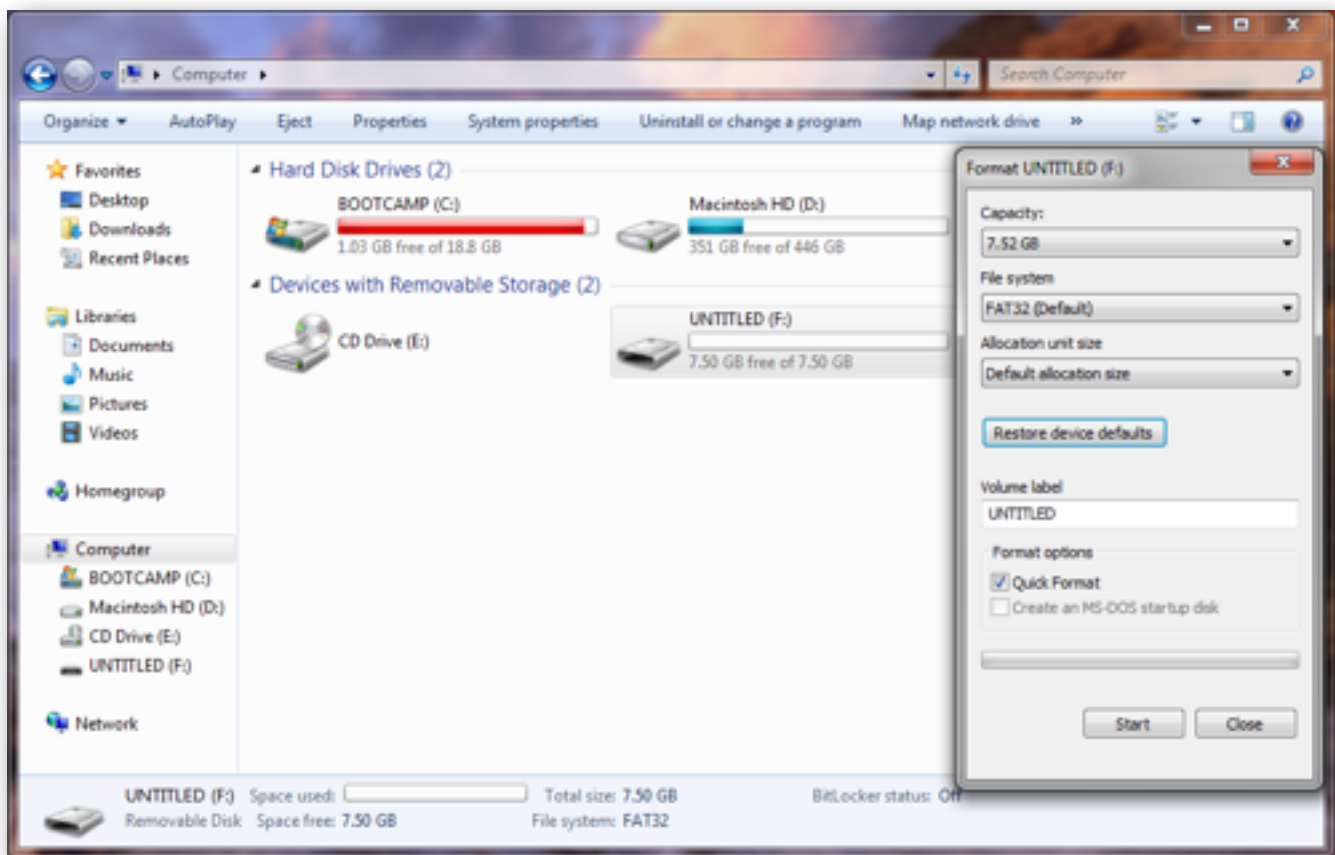
➡ Download the archive from GPSU.

➡ <http://gpsunderground.com/forum/peugeot-citroen>

#### Step 2: Prepare the key

➡ Plug the USB Key on your Windows PC.

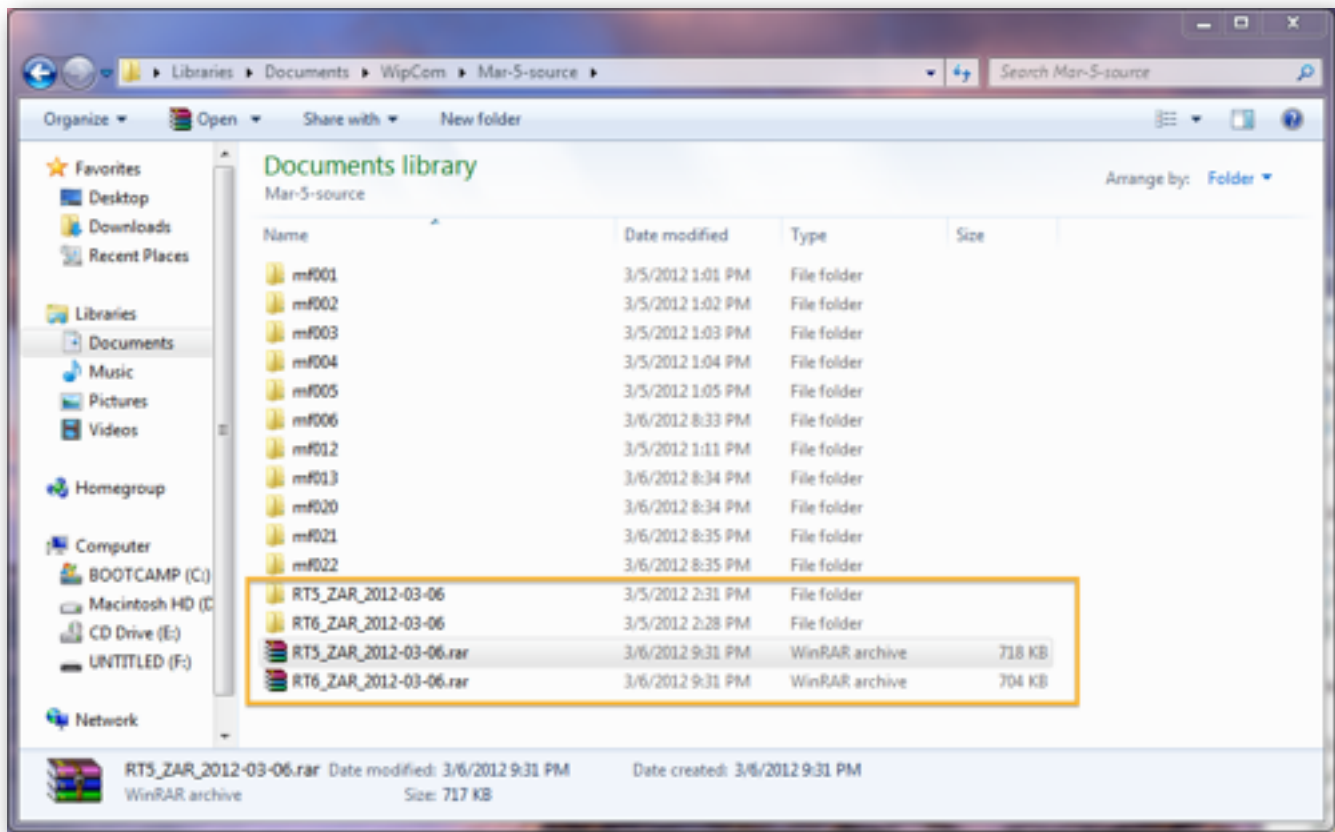
➡ Go to Computer, right click on the USB icon, then choose Format... to format the key (It can solve the nasty bug on RT6).



➡ From the pane click start, everything on the key will be wiped!

### Step 3: Prepare the files

➡ Unpack the archive previously downloaded.

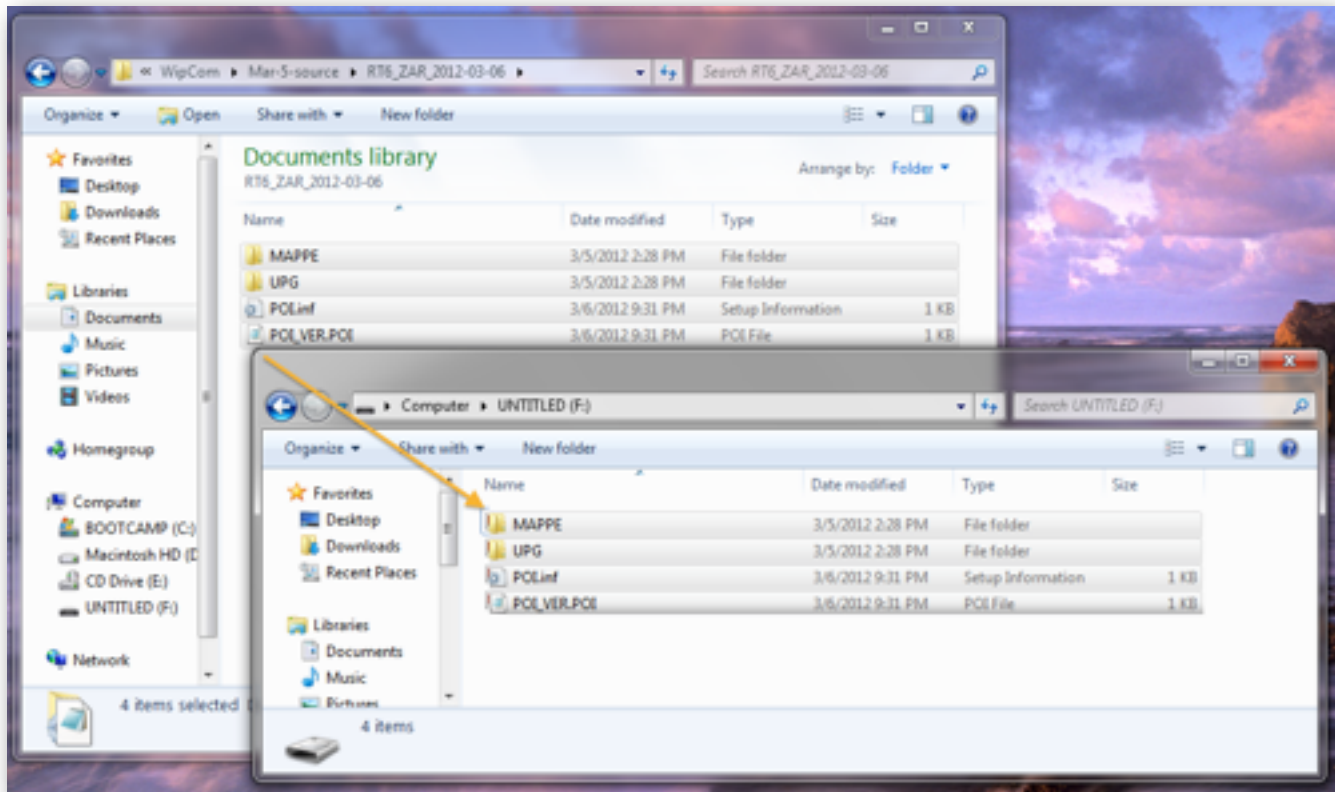


➡ Open the folder “RTx\_ZAR\_xxxx-xx-xx”.

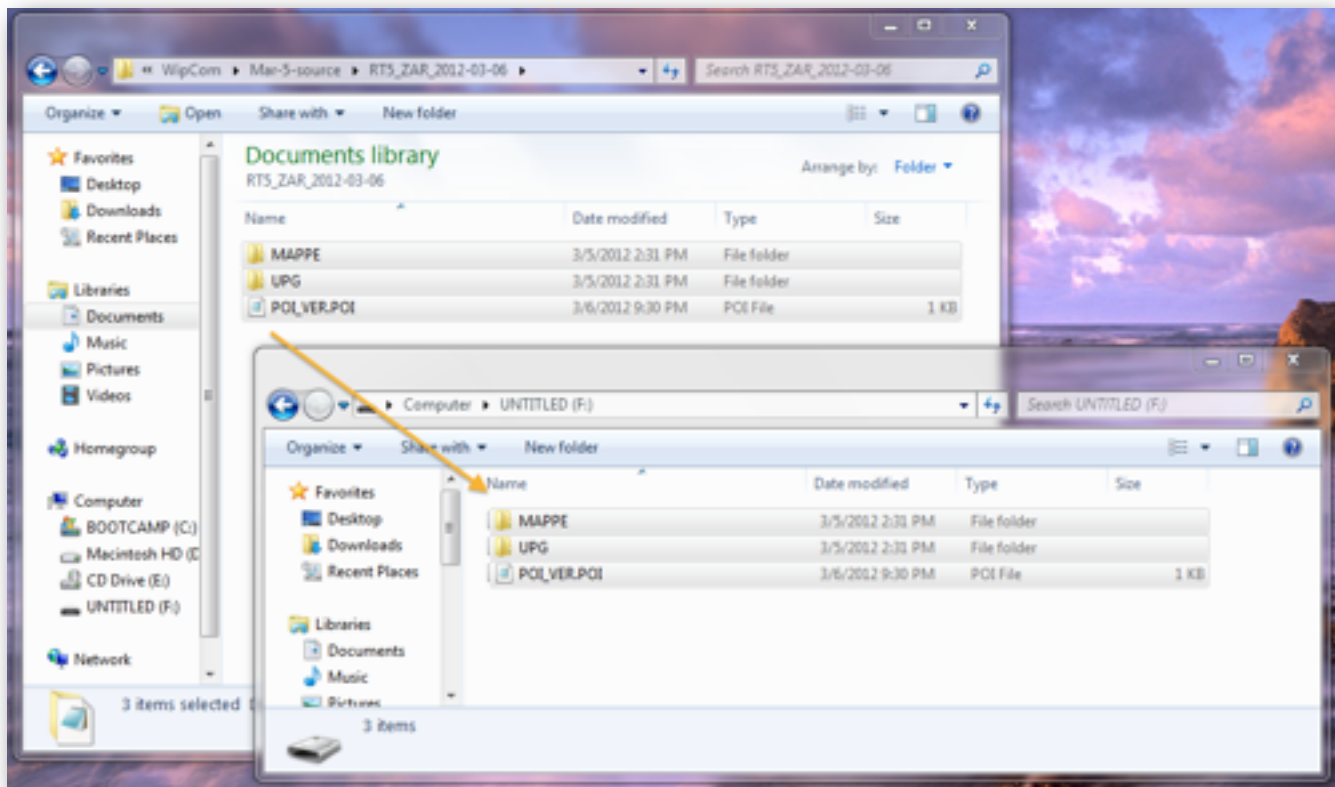
### Step 4: Move the files from the mac to the memory storage

➡ Drop the files to the UNTITLED Key.

➡ If you have a **RT6**, you’ll get this:



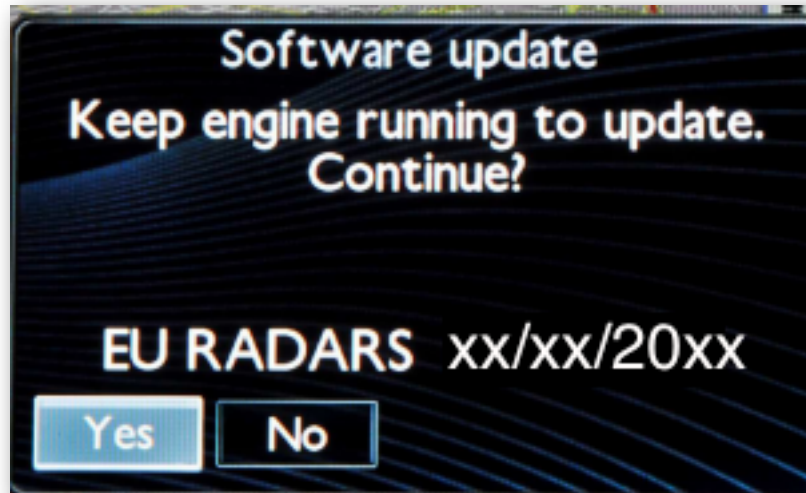
➡ If you have a RT4 or a RT5, you'll get this:



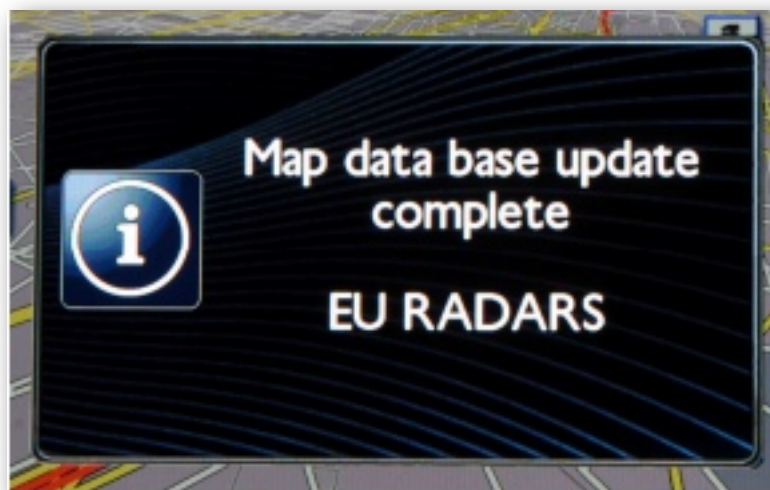
☛ At the end, eject the USB stick PROPERLY otherwise you'll damage the memory!!!

### Step 5: Insert the USB key into the Rtx system

☛ The Rtx will ask you to confirm the installation, select "yes".



✓ *The installation is very fast (30s), then you can eject the USB key. Done.*



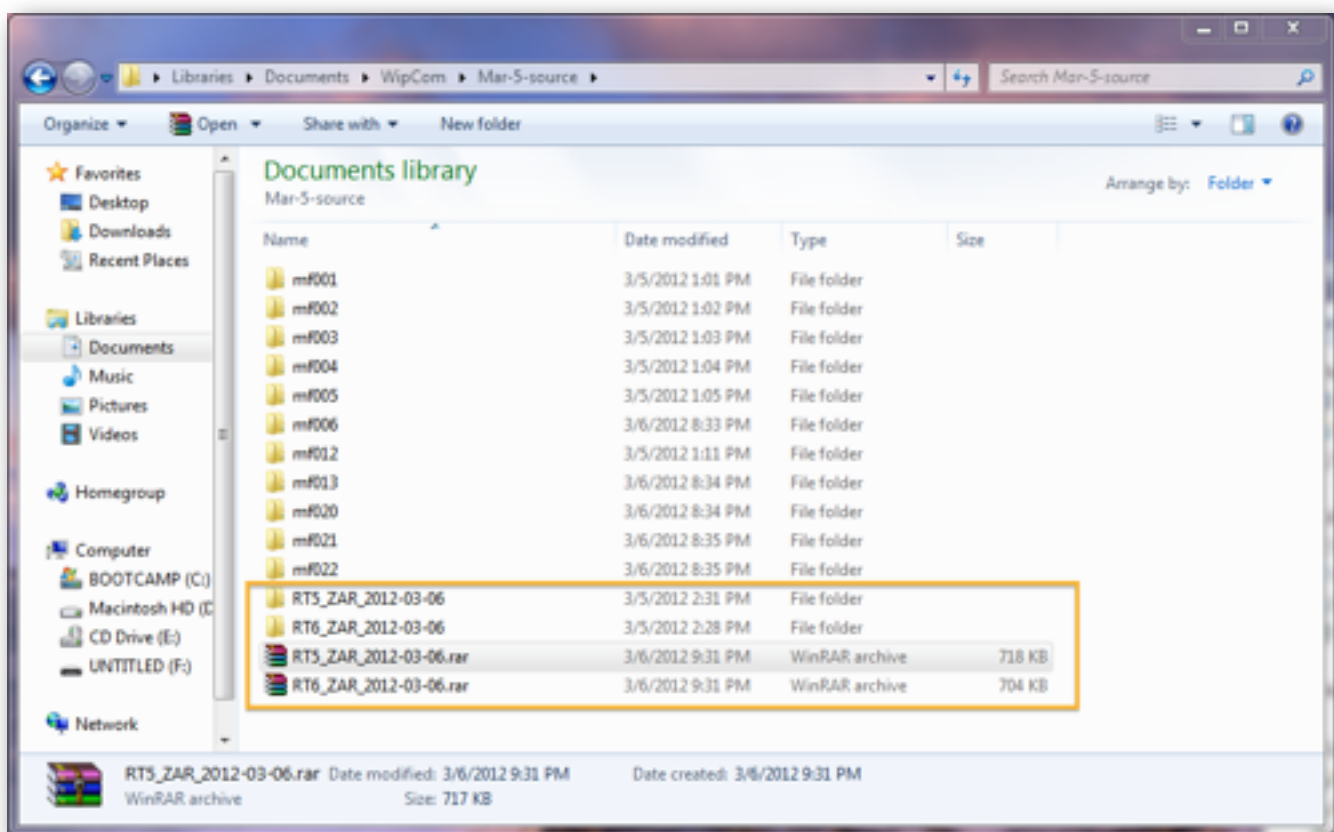
## - Section 2 – Use CD (see section 1 for USB) -

### Step 1: Get the files

- Download the archive from GPSU.
- <http://gpsunderground.com/forum/peugeot-citroen>

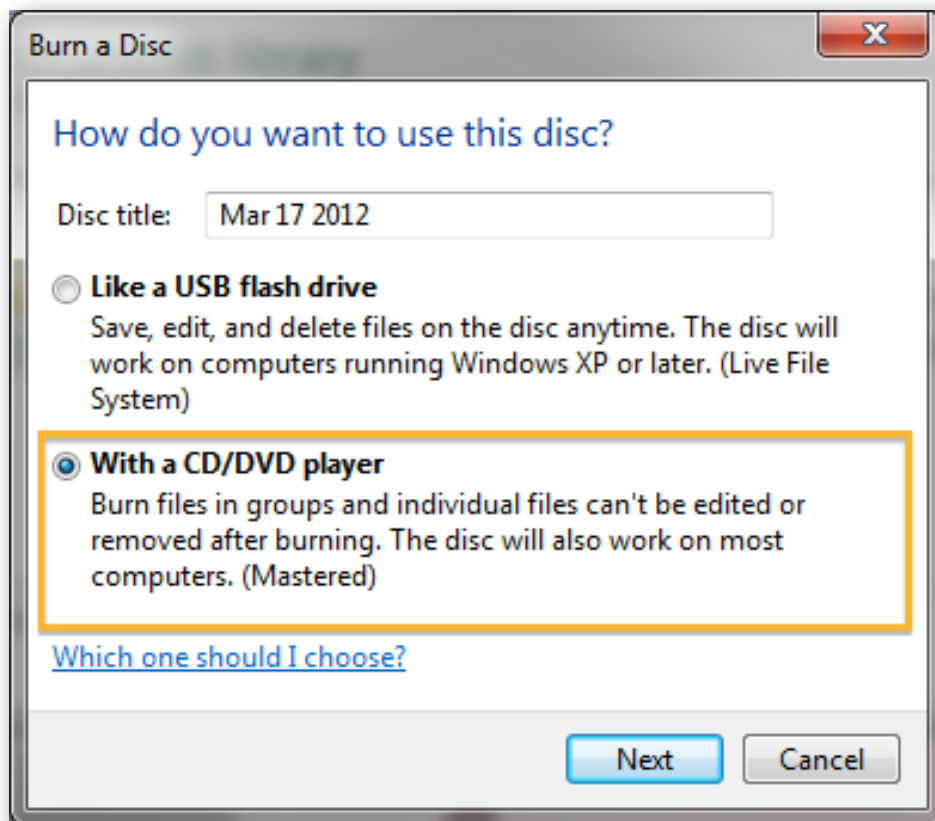
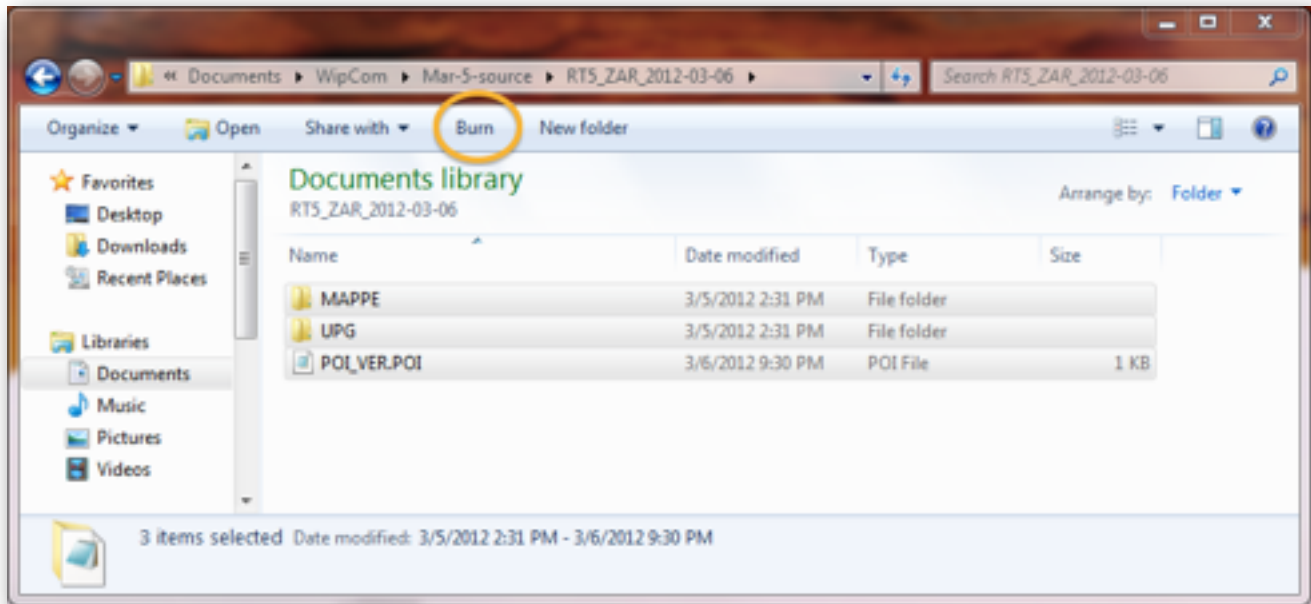
### Step 2: Prepare the files

- Unpack the archive previously downloaded.
- Open the folder “RTx\_ZAR\_xxxx-xx-xx”.



### Step 3: Burn the files

- Select all the files inside de folder, then right click and burn (see the pic).

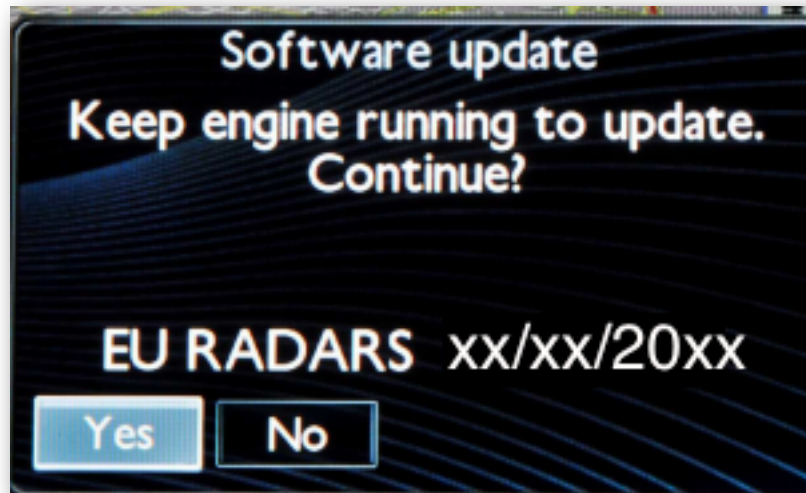


➡ Insert a blank disc, and follow the steps.

✓ *Burn the disc at low speed, max x4.*

**Step 4: Insert the burned CD into the Rtx system**

➔ The Rtx will ask you to confirm the installation, select “yes”.



✓ *The installation is very fast (30s), then you can eject the CD. Done.*

